

JIS COLLEGE OF ENGINEERING

NAAC 'A' ACCREDITED AUTONOMOUS INSTITUTION



Procedure
2025-2026

ACCREDITATION & AFFILIATION





Vision & Mission

Late Sardar Jodh Singh
Founder Chairman

Vision

“To develop a sustainable ecosystem of technical education while fostering quality in teaching-learning & research through techno-pedagogical approach, capacity building, inculcating ethical values & leadership qualities to create the global citizen for serving the society.”

Mission

WORLD CLASS EDUCATION

Create a cutting-edge educational environment with project-based learning, internship opportunities, and community service participation to support students' advanced learning.

CUTTING-EDGE RESEARCH

Provide a cutting-edge, project-based learning environment with internship opportunities and community service for students' higher education.

CAPACITY DEVELOPMENT

Offer capacity development programs for faculty and students focused on skills enhancement, leadership, and ethics through collaboration with experts from government, corporate, and civil sectors.

IMPACTFUL PEOPLE

Foster a culture of excellence in all academic and extracurricular areas through best practices that support personal and professional growth for students, faculty, and staff.

About JIS Group

JIS Group of Colleges intends to unite all dimensions of Education from Undergraduate to Post Graduate Programmes in Engineering and Technology, Computer Applications, Dental Science, Pharmacy, Hospitality, diverse streams of Management and so on under the same umbrella in order to comprehensively and collectively optimize the reach of Educational Initiatives in every strata and corner of society towards a better future. Our educational Initiatives believes that creating an academic foundation for social, cultural, scientific, economic and technological development in our Nation can mature into Global Interface by giving way to education exchange in the International territory as well.

About JIS College of Engineering

JIS College of Engineering is the flagship Institute under JIS Group Educational Initiative spearheading professional education for over two decades (Established in 2000) with wide spectrum of professional programs accompanied by state of the art academic resources.

JIS College of Engineering is located in the academic and industrial hinterland of Kalyani. Institute earned the highest laurels in terms of accreditation by NAAC - A' Grade, NBA, and AICTE. Ranked by NIRF. The Institute offers courses that are approved by AICTE and affiliated to MAKAUT (formerly WBUT). The Institution has been awarded autonomous status by UGC in the academic year 2011, which makes it the first of its kind in West Bengal. The digital learning initiatives of JIS College of Engineering has been endorsed by AICTE & The World Bank Group as India's first fully Flipped Institute. The research and innovations of the Institution has been indexed by ARRIA (26 to 50 rank) & Ministry of Education - Innovation Cell (5-star rating).



Sailent Features

- ▶ The faculty members are highly qualified, active, effective and acknowledged contributors to research & development.
- ▶ The college has good infrastructure which includes dedicated Smart Class room, dedicated laboratory infrastructure for Undergraduate Course and other amenities.
- ▶ We provide support and training for preparation of GRE, TOEFL, GATE etc.
- ▶ We frequently organize international and national events which include conference, seminar, webinar, lecture series, exchange program etc.
- ▶ Faculty and staff members are continuously upgraded with modern Teaching-Learning Technique through various training programs offered by WORLD BANK, AICTE, MHRD, UGC, MAKAUT etc.
- ▶ Student activity clubs regularly organize Extracurricular Activities like NCC, Sports, Cultural & Social Events.
- ▶ Students actively participate in Smart India Hackathon (SIH), Bengalathon, NPTEL, Coursera etc.
- ▶ The Institute has Industry Center of Excellence: Cisco Networking Academy, AWS Academy, Palo Alto Cybersecurity Academy, Microchip Academy, Red Hat Academy, Blue Prism Academy.
- ▶ The Central Library has well stocked Books and Journals.
- ▶ The College produces prestigious alumni.



Message

from the Managing Director's Desk

I wish to thank you for showing interest in JIS College of Engineering, JIS Group. We have been providing quality education for the past 24 years and over 5000 students have graduated from JISCE since its inception in 2000. At JISCE, students are expected to have an enriching and life-turning experience which will enable them to reach new heights in their professional life. We foster sharpening of skills and enhancement of knowledge base in our students through various extra-curricular, co-curricular and curricular activities through faculties who not only keep themselves as par with the current developments but also contribute to the expansion of the body of knowledge in their field of expertise.

To facilitate this, we have Centres of Excellence to enhance domain specific research and training among members of faculty and entrepreneurship among students. With very congenial and professional environment our faculty makes substantial contribution to the academia through quality teaching, publications, seminars, conferences, etc. The faculty contribution has received recognition by way of various collaborations we have with our partner institutions and universities in India and abroad, and the excellent goodwill we enjoy with the corporate world who generously contribute to our various academic processes. The corporate interactions including corporate supported projects undertaken by our students it provides a close hands on-experience to our students as part of our curriculum. Thus, as a student you certainly are expected to have an enriching and life turning experience that should propel you to take advantage of the new opportunities in life.

Mr. Taranjit Singh
Managing Director
JIS Group Educational Initiatives



Message

from the Group Director's Desk

It is very much safe to say that the world today we are experiencing is one of a kind. It has not been experienced by our generation not the one before us nor the one after us. But we are not in this alone, we are all together and together we will come out of it strong and determined. We have to understand that this world will never be the same again and I like to believe that we are stepping into The New World. We must learn to accept and adapt our lives in this New World. Our educational Initiatives believes that creating an academic foundation for social, cultural, scientific, economic and technological development in our Nation can mature into Global interface by giving way to education exchange in the International territory as well. Therefore, our focus is to achieve unparalleled excellence that will bring development to our society and mankind by optimizing their potential.

Mr. Simarpreet Singh
Group Director,
JIS Educational Initiatives

Message



From the Principal Desk

Welcome to JIS College of Engineering - Empowering the Future

At JIS College of Engineering, we pride ourselves on being a beacon of excellence in technical and professional education. Established with a vision to nurture innovation, leadership, and academic brilliance, we are committed to shaping the minds of tomorrow's global engineers, technologists, and leaders.

Why JIS College of Engineering?

- **Academic Excellence:** With a robust curriculum and industry-oriented programs, JIS College of Engineering offers undergraduate and postgraduate courses that are designed to equip students with the knowledge and skills needed to excel in the fast-evolving world of technology.
- **Experienced Faculty:** Our faculty consists of highly qualified educators and industry experts who provide mentorship and foster a culture of research, creativity, and critical thinking.
- **State-of-the-Art Infrastructure:** Our campus is equipped with modern laboratories, advanced computing facilities, smart classrooms, and well-stocked libraries to ensure a stimulating learning environment.
- **Industry Collaboration & Placements:** Strong ties with leading companies ensure that our students get ample exposure through internships, live projects, and industry interactions. The dedicated placement cell works tirelessly to secure top-tier job opportunities for our graduates.
- **Research & Innovation:** We encourage students to explore, innovate, and create through our specialized research centers and innovation hubs. Our focus on practical learning helps students turn theoretical concepts into real-world solutions.
- **Global Exposure:** Through partnerships with international universities and organizations, students have the opportunity to engage in global exchange programs and collaborations, making them more adaptable and globally competent.
- **Holistic Development:** At JIS College of Engineering, we believe in nurturing not just technical expertise but also well-rounded personalities. Our vibrant campus life offers a range of extracurricular activities, from sports and cultural festivals to technical clubs and leadership programs.

Join Us - Shape Your Future with Confidence

Choosing JIS College of Engineering means choosing a transformative educational experience that will empower you to lead and succeed in a dynamic world. We are not just an institution, but a community of learners, innovators, and achievers working towards a common goal of excellence.

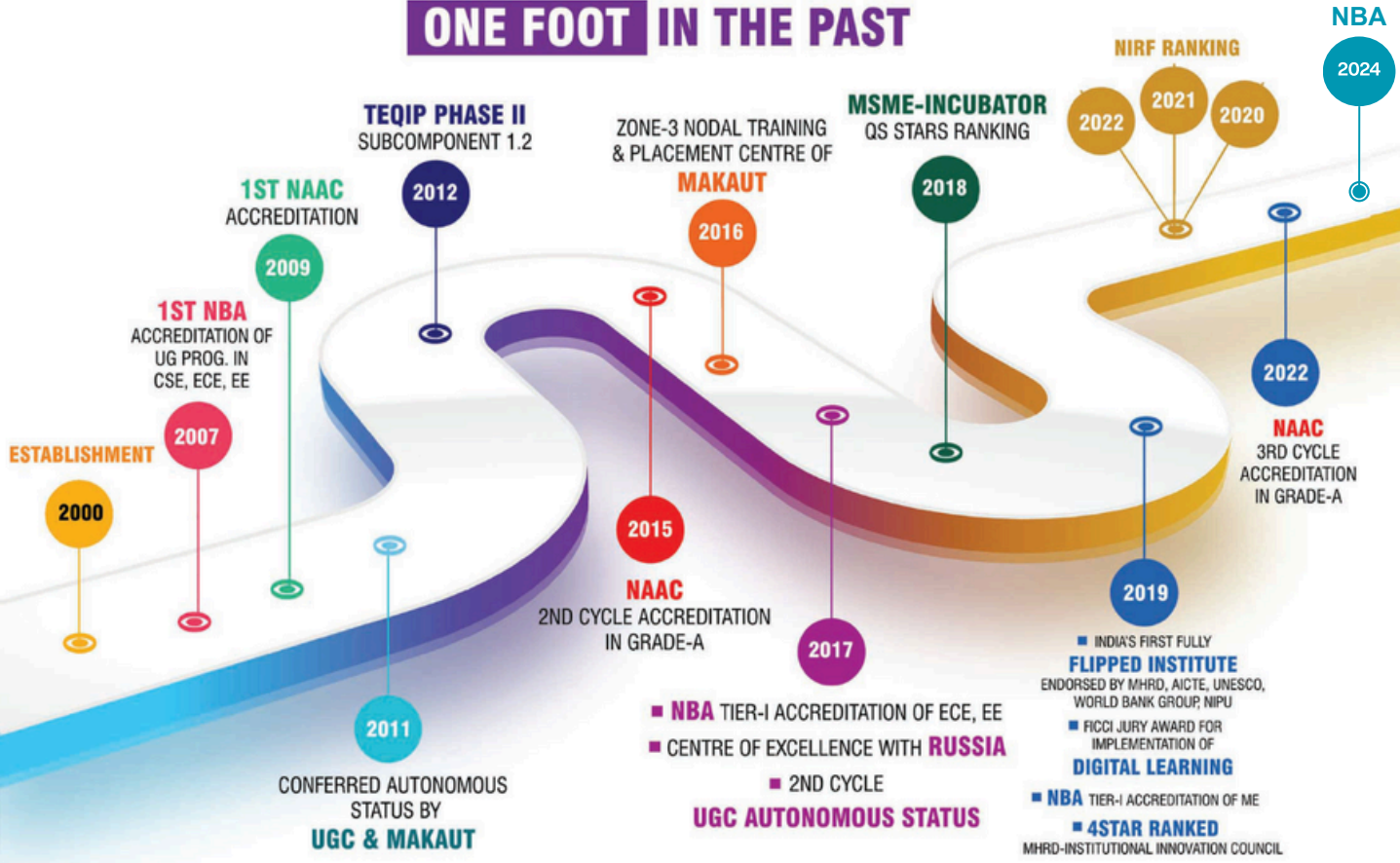
Warm regards,

Prof. (Dr.) Partha Sarkar

Principal, JIS College of Engineering

Our Milestones

ONE FOOT IN THE PAST



OUR PROGRAMS

POST GRADUATE PROGRAMS

MASTERS IN TECHNOLOGY (M.TECH), CA & BA

Computer Science and Engineering (MCS)

Electrical Engineering (EDPS)

Electronics and Communication Engineering (MCNT)

Mechanical Engineering (MME)

Computer Application

Business Administration

UNDERGRADUATE PROGRAMS

BACHELORS IN TECHNOLOGY (B.TECH)

Agricultural Engineering

Biomedical Engineering

Civil Engineering

Computer Science and Engineering

Computer Science and Technology

Computer Science and Engineering (AIML)

Electrical Engineering

Electronics and Communications Engineering

Information Technology

Mechanical Engineering

Department Of Agricultural Engineering

About Department

The Agricultural Engineering program at JIS College of Engineering in Kalyani, combines rigorous academics with practical experience to prepare students for careers at the intersection of engineering and agriculture. The curriculum covers essential areas such as farm machinery, irrigation systems, soil conservation, and renewable energy applications in agriculture. Students benefit from well-equipped laboratories and experimental farms that facilitate hands-on learning. Our curriculum incorporates the study of smart farming techniques, including modern tractors, drones for crop pesticide spraying, automated system for post-harvest processing. The faculty consists of experienced professionals who mentor students in both theoretical knowledge and practical skills. JIS College of Engineering, Kalyani, thus offers a comprehensive educational experience that fosters innovation and prepares students to make significant contributions to sustainable agricultural development.

Vision

The Agricultural Engineering Department of JIS College of Engineering fosters the upbringing of technically sound and ethically perfect professionals with innovative mind-set for serving the society at large.

- **Comprehensive Curriculum:** The Agricultural Engineering program at JIS College of Engineering is designed to provide a comprehensive understanding of agricultural practices, emphasizing both theoretical knowledge and practical skills. Students cover subjects such as soil mechanics, irrigation engineering, farm machinery, crop production technology, and agricultural processing.
- **State-of-the-Art Facilities:** The College boasts modern laboratories equipped with the latest technology, allowing students to conduct experiments and research in areas such as soil testing, crop modeling, and agricultural machinery. These facilities support hands-on learning and practical application of theoretical concepts.
- **Experienced Faculty:** The faculty members at JIS College of Engineering bring a wealth of academic expertise and industry experience to the program. They are committed to providing quality education through innovative teaching methods and mentorship; ensuring students are well-prepared for challenges in the agricultural sector.
- **Industry Exposure:** JIS College of Engineering facilitates industrial visits and internships with leading agricultural organizations and research institutions.
- **Beyond Syllabus Coaching:** Preparation support for GATE and AIEEA and other competitive exams.
- **Advance Lab Facilities :** Equipped with modern farm machinery, Post Harvesting Engineering Lab and Modern Soil and water and irrigation lab equipment.
- **Research Opportunities:** The college encourages research and innovation in agricultural engineering through projects and collaborations with industry partners and government agencies.
- **Student Publication:** Contribution to indexed and non-indexed interaction and national journals.
- **Collaborative Environment:** The College fosters a collaborative learning environment where students engage in group projects, seminars, and workshops. The program emphasizes sustainable agricultural practices and environmental conservation.
- **Industry-Academic Interaction:** Visits, seminars, and guest lecturers foster collaboration and networking.
- **Career Prospects:** Graduates of the Agricultural Engineering program at JIS College of Engineering are guidance and placement assistance for job opportunities to pursue diverse career paths. They can work in agricultural machinery manufacturing companies, government agricultural departments, research and development organizations, and agribusiness firms.

Mission

- To impart a thorough knowledge of various core engineering subjects to our entire undergraduate students for ascertaining their fundamental knowledge in Agricultural Engineering.
- To expose our students to a curriculum consisting of modern laboratories, interdisciplinary subjects and industrial trainings in such a way that they get international exposure in world class industries.
- To trained the students with modern knowledge of drafting & analysis software for developing their computational capabilities as well as promoting higher studies and research works.
- To strengthen our students with innovative ideas and build the potential of leadership & teamwork through various projects in their curriculum.
- To build strong ethical qualities in the students for lifelong learning and serving the society and nation as a whole.

Message from HOD's Desk



Dr. Nabanita Sarkar

Welcome to the Department of Agricultural Engineering, JIS College of Engineering, Kalyani, West Bengal. The department works with the objective of addressing critical challenges faced by industry, society and the academia.

Perhaps even more important is our unceasing commitment to our students, helping them to learn, grow, develop and achieve their goals in their pursuit to excel in their professional career.

Message from Students



"My experience at the Agricultural Engineering Department, JIS College of Engineering, was exceptional. The rigorous curriculum and supportive faculty prepared me well for industry challenges. I'm grateful for securing a placement at BlueStar, where I apply my skills daily. Biomedical Engineering department of JIS College of Engineering truly shaped my career path."

Md. Shafeeur Rahaman
Department of Agricultural Engineering
JIS College of Engineering



As a student of the Agricultural Engineering Department, I am deeply grateful for the incredible opportunities and support provided by our department, faculty, labs, and college. I am also immensely thankful for the state-of-the-art labs and facilities that have allowed me to gain hands on experience with the latest agriculture technologies and implement. Our curriculum covers modern agricultural machinery, Post harvest equipment, Soil and water relationship, modern irrigation methods. We engage in real life projects supports by our teachers.

Rupam Roy
Department of Agricultural Engineering
JIS College of Engineering



Program Outcomes (POs)

After successful completion of the B.Tech. Program, the Graduates will be able to achieve the following Program Outcomes:

- **Engineering Knowledge:** Apply knowledge of mathematics, science, engineering fundamentals, and an engineering specialization to the solution of complex engineering problems.
- **Problem Analysis:** Identify, formulate, review research literature, and analyze complex engineering problems reaching substantiated conclusions using first principles of mathematics, natural sciences, and engineering sciences.
- **Design/Development of Solutions:** Design solutions for complex engineering problems and design system components or processes that meet specified needs with appropriate consideration for public health and safety, and the cultural, societal, and environmental considerations.
- **Conduct Investigations of Complex Problems:** Use research-based knowledge and research methods including design of experiments, analysis and interpretation of data, and synthesis of the information to provide valid conclusions.
- **Modern Tool Usage:** Create, select, and apply appropriate techniques, resources, and modern engineering and IT tools including prediction and modeling to complex engineering activities with an understanding of the limitations.
- **The Engineer and Society:** Apply reasoning informed by the contextual knowledge to assess societal, health, safety, legal and cultural issues and the consequent responsibilities relevant to the professional engineering practice.
- **Environment and Sustainability:** Understand the impact of the professional engineering solutions in societal and environmental contexts, and demonstrate the knowledge of, and need for sustainable development.
- **Ethics:** Apply ethical principles and commit to professional ethics and responsibilities and norms of the engineering practice.
- **Individual and Teamwork:** Function effectively as an individual, and as a member or leader in diverse teams, and in multidisciplinary settings.
- **Communication:** Communicate effectively on complex engineering activities with the engineering community and with society at large, such as, being able to comprehend and write effective reports and design documentation, make effective presentations, and give and receive clear instructions.
- **Project Management and Finance:** Demonstrate knowledge and understanding of the engineering and management principles and apply these to one's own work, as a member and leader in a team, to manage projects and in multidisciplinary environments.
- **Life-Long Learning:** Recognize the need for, and have the preparation and ability to engage in independent and life-long learning in the broadest context of technological change.

PEOs:

The Program Educational Objectives (PEO) of the Agricultural Engineering Program will demonstrate the essential components of a successful engineer for the best career based professional accomplishments after graduation. Therefore, the objectives are following:

1. **Professional Skills & Employment:** To teach students in such a way that they can apply relevant skills in basic science, engineering design, modeling, manufacturing, and management to real-life problems in industries as well as in the field.
2. **Entrepreneurship & Lifelong Learning:** To encourage the incumbents for entrepreneurship & higher studies such that they can impart useful contribution in the field of education, research and modern technology in Agricultural Engineering as well as other allied fields.
3. **Ethics & Society:** To train the students in such a manner that they effectively participate in multicultural and multidisciplinary projects maintaining industrial ethics for the sustainable development of the society.

PSOs:

After successful completion of the B.Tech. in Agricultural Engineering Program, the Graduates will be able to achieve the following Program Specific Outcomes:

PSO₁

Apply necessary mathematical and software tools for design, analysis and fabrication of components used in the field of Agricultural Engineering.

PSO₂

Use critical thinking to analyze the cause and effect of complicated mechanical processes to develop modern engines and machineries for a sustainable future.

PSO₃

Exhibit leadership and team work in handling industrial projects as well as pursue higher studies to contribute in the research and development of advanced materials and green energy.

Department Of Biomedical Engineering

About Department

Established in 2003, the Department of Biomedical Engineering at JIS College of Engineering excels in integrating engineering with medical sciences. We focus on cutting-edge research, innovative education, and practical solutions to advance healthcare technology. Our interdisciplinary approach prepares students to be leaders, driving advancements in medical technology and improving healthcare services to society.

Vision

To foster excellence in Biomedical Engineering Education and Research at both undergraduate and postgraduate levels, by producing globally competitive professionals to serve the mankind and society.

Highlights of the Department

- Biomedical engineering is a dynamic interdisciplinary stream and is the application of engineering principles to comprehend the body mechanism in terms of their technological creations to the study of medical and biological problems by developing tools that can aid in the biomedical care of patients in terms of diagnosis and therapy.
- The Department housed in the NIRF Ranked and NAAC 'A' Accredited and MHRD sponsored Autonomous Engineering Institution
- The faculty members of the department are active, effective and acknowledged contributors to research & development.
- The department is having good infrastructure which includes dedicated Smart Class room, dedicated laboratory infrastructure for Undergraduate Course and other amenities.
- Assured Placement in Healthcare sector and golden opportunity to serve society and mankind
- Beyond Curriculum efficient and enhanced training in Healthcare sector, Biomedical Equipment manufacturing industry to ensure all-round development of a Biomedical Engineer's ability, skill and temperament to make 100% students' industry ready.
- Physiology and Material Testing Laboratory, Biomedical Instrumentation Laboratory, Bio signal & Image Processing Laboratory.
- Specialized Project Set-up sponsored by Texas Instruments
- Nurturing students for Higher Study across India and abroad by providing research exposure from globally renowned institutes.
- Department produces prestigious alumni and resource person
- Provide support and training for preparation of GRE, TOEFL, GATE etc.
- Frequent organizer of international and national events which include conference, seminar, webinar, lecture series, exchange program etc.
- Faculty and staff members are continuously upgraded with modern Teaching-Learning Technique through various training programs offered by WORLD BANK, AICTE, MHRD, UGC, MAKAUT etc.

Mission

DM1: To provide graduates with the knowledge and abilities needed for their professional development in biomedical engineering.

DM2: To create a learning environment that promotes excellence, equipping future professionals with the skills and expertise necessary to thrive in the rapidly evolving landscape of medical technology.

DM3: To instill in Biomedical Engineering graduates a sense of professionalism, ethics, values, and a drive for innovation, responsibility, commitment, and leadership.

Message from HOD's Desk



Dr. Karabi Ganguly

Greetings from the Department of Biomedical Engineering, JIS College of Engineering. Our department is committed to provide engineering support in healthcare through cutting-edge research, innovative education, and collaborative efforts. We work together to achieve excellence and anticipate significantly improving the biomedical industry. Together, let's turn technical concepts into effective fixes that enhance the lives of others. We are thrilled to assist you in advancing both professionally and academically.

Message from Students



"My experience at the Department of Biomedical Engineering, JIS College of Engineering, was exceptional. The rigorous curriculum and supportive faculty prepared me well for industry challenges. I'm grateful for securing a placement at BlueStar, where I apply my skills daily. Biomedical Engineering department of JIS College of Engineering truly shaped my career path."

Diptayan Mukherjee
Graduate Batch 2020-2024
Department of Biomedical Engineering
JIS College of Engineering



"My time at the Department of Biomedical Engineering, JIS College of Engineering, was enriching. The curriculum provided deep insights and practical skills crucial for my career. Thanks to the department's guidance, I secured a placement at ZifoRnD Solutions, where I continue to grow professionally. Dept. of Biomedical Engineering, JIS College of Engineering played a pivotal role in shaping my success."

Dwaipayan Roy
Graduate Batch 2020-2024
Department of Biomedical Engineering
JIS College of Engineering



Program Outcomes (POs)

After successful completion of the B.Tech. Program, the Graduates will be able to achieve the following Program Outcomes:

- **Engineering Knowledge:** Apply knowledge of mathematics, science, engineering fundamentals, and an engineering specialization to the solution of complex engineering problems.
- **Problem Analysis:** Identify, formulate, review research literature, and analyze complex engineering problems reaching substantiated conclusions using first principles of mathematics, natural sciences, and engineering sciences.
- **Design/Development of Solutions:** Design solutions for complex engineering problems and design system components or processes that meet specified needs with appropriate consideration for public health and safety, and the cultural, societal, and environmental considerations.
- **Conduct Investigations of Complex Problems:** Use research-based knowledge and research methods including design of experiments, analysis and interpretation of data, and synthesis of the information to provide valid conclusions.
- **Modern Tool Usage:** Create, select, and apply appropriate techniques, resources, and modern engineering and IT tools including prediction and modeling to complex engineering activities with an understanding of the limitations.
- **The Engineer and Society:** Apply reasoning informed by the contextual knowledge to assess societal, health, safety, legal and cultural issues and the consequent responsibilities relevant to the professional engineering practice.
- **Environment and Sustainability:** Understand the impact of the professional engineering solutions in societal and environmental contexts, and demonstrate the knowledge of, and need for sustainable development.
- **Ethics:** Apply ethical principles and commit to professional ethics and responsibilities and norms of the engineering practice.
- **Individual and Teamwork:** Function effectively as an individual, and as a member or leader in diverse teams, and in multidisciplinary settings.
- **Communication:** Communicate effectively on complex engineering activities with the engineering community and with society at large, such as, being able to comprehend and write effective reports and design documentation, make effective presentations, and give and receive clear instructions.
- **Project Management and Finance:** Demonstrate knowledge and understanding of the engineering and management principles and apply these to one's own work, as a member and leader in a team, to manage projects and in multidisciplinary environments.
- **Life-Long Learning:** Recognize the need for, and have the preparation and ability to engage in independent and life-long learning in the broadest context of technological change.

PEOs:

- **PEO1.** Graduates shall pursue advanced studies and have successful careers in diverse fields in Biomedical Engineering.
- **PEO2.** Graduates will be able to recognize, evaluate, and resolve issues by innovative concept and up-to-date information to satisfy societal expectations.
- **PEO3.** Graduates shall excel themselves in field of teaching, research and development with their in-depth knowledge and innovative minds.
- **PEO4.** Graduates will be able to apply practical knowledge and skill for successful entrepreneurship.
- **PEO5.** Graduates shall work as part of teams on interdisciplinary projects with the multifaceted aspects of using modern tools.

PSOs:

- PSO1:** Graduates will be able to design and develop indigenous medical devices that addresses the present societal healthcare problems by applying the concepts of Medical science, Engineering and Technology.
- PSO2:** Graduates shall use software expertise and information and communication technology (ICT) to innovate and resolve problems in the medical field.
- PSO3:** Graduates will be equipped with the skills and knowledge necessary to conduct research, use innovative medical technologies in a multi disciplinary setting with professionalism and ethics.

Department Of Civil Engineering

About Department

Department of Civil Engineering at JIS College of Engineering, Kalyani, has been in existence since 2011. The Civil Department focused on the Designing, Surveying, and Construction sectors, producing technically expert engineers. The Department follows advanced teaching methodologies, with state-of-the-art facilities for Laboratory. Faculty members provide civil on-site training, through Educational Cum Industrial Visits. The department works with the objective of addressing critical challenges faced by the industry, society and academia.

Vision

The Department of Civil Engineering strives to graduate highly qualified engineers, maintain nationally recognized research and provide quality professional and community service to the nation.

Highlights of the Department

- Subjects taught in Civil Engineering are Industry required & job oriented and are framed by faculty members.
- To develop world class Civil Engineers our students work on real life projects with the help of advance teaching and learning aids and state of the art laboratory facilities.
- Faculty members are from renowned institutes like IITs, NITs and institute of repute with good academic and research background.
- Different software is functional such as BIM, AutoCAD, Staad Pro etc. for the holistic growth of our students.
- Industrial as well as Government Sector visits are organized on regular basis.

Mission

M1: To educate students from the foundations to the state of art knowledge in the development of electronic devices and communication systems with design optimizations and to carry out research through constant interaction with research organizations and industry.

M2: To nourish the mind of growing engineers through qualitative evaluations, internal assessments, corporate trainings, efficient technical communication skills and creative project assignments.

M3: To motivate the engineers of the future through competition in communication skill, seminar presentation, project, and group discussion.

M4: To encourage the intended engineers in kind, humble and moral behaviour with ignition in mind to contribute for the welfare of society.



Ms. Latifa Haque

Welcome to the department of Civil Engineering, JIS College of Engineering, Kalyani, West Bengal. The department works with the objective of addressing critical challenges faced by industry, society and the academia. Perhaps even more important is our unceasing commitment to Our students, helping them to learn, grow, develop, and achieve Their goals in their pursuit to excel in their professional career.

Message from Students



I am incredibly appreciative of the JIS College of Engineering, Kalyani's Civil Engineering Department for supporting my development and creating a positive environment setting for learning. Their commitment to quality has enabled me to pursue my interests and broaden my perspectives. Every facet of this adventure, from innovative resources to motivating mentors, has been priceless. Looking back, I am incredibly grateful for the experiences, mentorship, and chances that have moulded me and provided me with the chance to be placed on campus at Pinnacle Infotech Solutions and RVR Projects Private Limited.

Arnab Das (4th Year), Department of Civil Engineering,
JIS College of Engineering



As a student of this vibrant institution, I am proud to be a part of a community that encourages curiosity, creativity, and collaboration. The support from our dedicated faculties, the lively campus environment, and the diverse student body make every day a meaningful experience. The institution is a very lovely location overall, and everyone here is helpful. It's the ideal environment for someone who wants to have a successful career.

Sudipta Das (3rd Year), Department of Civil Engineering,
JIS College of Engineering



Program Outcomes (POs)

After successful completion of the B.Tech Program, the Graduates will be able to achieve the following Program Outcomes:

- **Engineering knowledge:** Apply the knowledge of mathematics, science, engineering fundamentals, and an engineering specialization to the solution of complex engineering problems.
- **Problem analysis:** Identify, formulate, review research literature, and analyze complex engineering problems reaching substantiated conclusions using first principles of mathematics, natural sciences, and engineering sciences.
- **Design/development of solutions:** Design solutions for complex engineering problems and design system components or processes that meet the specified needs with appropriate consideration for the public health and safety, and the cultural, societal, and environmental considerations.
- **Conduct investigations of complex problems:** Use research-based knowledge and research methods including design of experiments, analysis and interpretation of data, and synthesis of the information to provide valid conclusions.
- **Modern tool usage:** Create, select, and apply appropriate techniques, resources, and modern engineering and IT tools including prediction and modeling to complex engineering activities with an understanding of the limitations.
- **The engineer and society:** Apply reasoning informed by the contextual knowledge to assess societal, health, safety, legal and cultural issues and the consequent responsibilities relevant to the professional engineering practice.
- **Environment and sustainability:** Understand the impact of the professional engineering solutions in societal and environmental contexts, and
- **demonstrate the knowledge of, and need for sustainable development.**
- **Ethics:** Apply ethical principles and commit to professional ethics and responsibilities and norms of the engineering practice.
- **Individual and team work:** Function effectively as an individual, and as a member or leader in diverse teams, and in multidisciplinary settings.
- **Communication:** Communicate effectively on complex engineering activities with the engineering community and with society at large, such as, being able to comprehend and write effective reports and design documentation, make effective presentations, and give and receive clear instructions.
- **Project management and finance:** Demonstrate knowledge and understanding of the engineering and management principles and apply these to one's own work, as a member and leader in a team, to manage projects and in multidisciplinary environments.
- **Life-long learning:** Recognize the need for, and have the preparation and ability to engage in independent and life-long learning in the broadest context of technological change.

PEOs:

PEO 1: Graduates will be able to analyze, design and propose a feasible solution to civil engineering problems by applying basic principles of mathematics, science and engineering.

PEO 2: Graduates will be inculcated with necessary professional skills, effective oral and written communication to be productive engineers.

PEO 3: Graduates will be able to work as a team in intra and interdisciplinary end over for development of new ideas and products to serve in contemporary societal contexts.

PEO 4: Graduates will be able to face challenges of the world economic order by incorporating expertise gained by faculty in consultancy work, for educating students, involving modern tools and techniques.

PEO 5: Graduates will achieve a high level of technical and managerial expertise to achieve excellence, outstanding leadership to succeed in positions in civil engineering profession with higher threshold start in employment background.

PSOs:

PSO1: Graduates will be able to apply technical skills and modern engineering tools for civil engineering day to day practice.

PSO2: Graduates will be able to participate in critical thinking and problem solving of civil engineering field that requires analytical and design requirements.

PSO3: Graduates will be able to pursue of lifelong learning and professional development to face the challenging and emerging needs of our society.

Department Of Computer Science & Engineering

About Department

The Department of Computer Science and Engineering was established with the paramount objective of delivering superior education in the realm of Computer Science and Engineering, while proactively addressing both contemporary and future challenges. From its very inception, the department has been committed to providing outstanding infrastructural facilities, empowering students to meet the evolving demands of the industry. The department is dedicated to imparting a robust foundation of theoretical knowledge and practical skills in the latest technological advancements, facilitating seamless employment opportunities across various sectors. Our department boasts state-of-the-art centralized laboratories, equipped with the latest configurations, fostering an environment conducive to cutting-edge research and innovation. Actively engaged in diverse research domains, our faculty and students explore fields such as Security, Mobile Applications, Wireless Networking, Machine Intelligence, and Image Processing, among others. Our students have excelled in numerous inter- and intra-institutional events, securing various accolades. Our esteemed faculty members are involved in several prestigious programs, including NPTEL, IIT-Bombay Spoken Tutorial Program, QEEE program, and SWAYAM program, to name a few. The postgraduate program, M. Tech. in Computer Science and Engineering, commenced in 2008, further enriching our academic offerings. The undergraduate program received accreditation from the National Board of Accreditation in 2006, and the college was granted autonomy by the UGC in 2011.

Vision

The Computer Science and Engineering Department at JIS College of Engineering will be a leader in computing innovation through excellence in undergraduate and graduate education, active research programmes, international and interdisciplinary nature of knowledge dissemination and capacity building.

Highlights of the Department

- Highly experienced and affectionate teachers with qualifications from well recognized institutions
- Interactive Teaching-Learning
- PCs with latest configuration in Laboratories
- Digital classrooms
- Spacious and well-lit classrooms
- Departmental Library, Seminar Hall
- Uninterrupted Power Supply
- R&D on mobile & internet technology, image and multimedia processing, artificial intelligence and optimization, networking and security etc.
- Publications in prestigious international and national journals and conferences
- Organization of and participation & presentations in workshops, seminars, symposia and conferences.
- Several awards and recognition won by the students in regional and national competitions / forums
- Regular students' feedback
- Emphasizing Fundamental / core concepts & Practical applications
- IT Skill development
- Outcome based education
- Students' Counselling
- Projects, Training, Workshops, Seminars, Mock Tests
- Online video lectures
- Intensive Laboratory sessions on Programming, Multimedia & Graphics, Internet Technologies, Databases, Networking, Operating Systems, Computer Organization and Architecture etc.
- PhD. level research guidance
- Filing of patents and copyrights.
- Assistance for academic placements
- Co-curricular and Extra-curricular activities
- Industry Placements
- Programming Competition
- Personality & Communication skill development

Mission

The Department's mission is to

- DM1: Provide students and faculty members with an open environment that encourages professional and personal growth with world class education.
- DM2: Prepare students for flexible career paths through continuous education in computing and multidisciplinary knowledge with project based learning and collaborative learning to serve the society.
- DM3: Motivate and encourage the students to build a successful career in the Industry, Academics, Research and/or Entrepreneurship through flexible programs of study that can be adapted to support individual career goals.
- DM4: Promote a culture of excellence in curricular, co-curricular and extracurricular activities through upskilling and reskilling.

Message from HOD's Desk



Dr. Bikramjit Sarkar

The Department of Computer Science and Engineering cordially invites aspiring individuals to join our esteemed community. Committed to superior education and forward-looking solutions, we offer exceptional infrastructure, state-of-the-art laboratories, and research in areas such as Security and Machine Intelligence. Accredited since 2006, our curriculum, including the M.Tech. program initiated in 2008, ensures seamless employability. Our distinguished faculty and students excel in prestigious programs, demonstrating our dedication to academic excellence and societal impact.

Message from Students



The training and placement cell helps the students a lot in their placements by providing them proper training and guidance. Each and every person of the college is helpful and the college is overall very beautiful place and it's the perfect place for someone that helps in having a good career.

Moumita Chakraborty, CSE, 4th Year



JISCE provided a lot of opportunities for projects and events like techfests. Department of CSE really have amazing faculties which have supported and motivated me. When I joined JISCE, it was never about learning new things every day. But, it was about using that learnt skills in your real-life.

Aman Adarsh, CSE, 4th Year



Program Outcomes (POs)

After successful completion of the B.Tech. Program, the Graduates will be able to achieve the following Program Outcomes:

- **Engineering Knowledge:** Apply knowledge of mathematics, science, engineering fundamentals, and an engineering specialization to the solution of complex engineering problems.
- **Problem Analysis:** Identify, formulate, review research literature, and analyze complex engineering problems reaching substantiated conclusions using first principles of mathematics, natural sciences, and engineering sciences.
- **Design/Development of Solutions:** Design solutions for complex engineering problems and design system components or processes that meet specified needs with appropriate consideration for public health and safety, and the cultural, societal, and environmental considerations.
- **Conduct Investigations of Complex Problems:** Use research-based knowledge and research methods including design of experiments, analysis and interpretation of data, and synthesis of the information to provide valid conclusions.
- **Modern Tool Usage:** Create, select, and apply appropriate techniques, resources, and modern engineering and IT tools including prediction and modeling to complex engineering activities with an understanding of the limitations.
- **The Engineer and Society:** Apply reasoning informed by the contextual knowledge to assess societal, health, safety, legal and cultural issues and the consequent responsibilities relevant to the professional engineering practice.
- **Environment and Sustainability:** Understand the impact of the professional engineering solutions in societal and environmental contexts, and demonstrate the knowledge of, and need for sustainable development.
- **Ethics:** Apply ethical principles and commit to professional ethics and responsibilities and norms of the engineering practice.
- **Individual and Teamwork:** Function effectively as an individual, and as a member or leader in diverse teams, and in multidisciplinary settings.
- **Communication:** Communicate effectively on complex engineering activities with the engineering community and with society at large, such as, being able to comprehend and write effective reports and design documentation, make effective presentations, and give and receive clear instructions.
- **Project Management and Finance:** Demonstrate knowledge and understanding of the engineering and management principles and apply these to one's own work, as a member and leader in a team, to manage projects and in multidisciplinary environments.
- **Life-Long Learning:** Recognize the need for, and have the preparation and ability to engage in independent and life-long learning in the broadest context of technological change.

PEOs:

PEO 1:

Graduates will be engineering practitioners and leaders, who would assist to resolve industry's technological problems.

PEO 2:

Graduates will be engineering professionals, innovators or entrepreneurs engaged in technology development, technology deployment, or engineering system implementation in industry and research institute.

PEO 3:

Graduates will interact with their peers in other disciplines in industry and society and contribute to social awareness and the economic growth of the country.

PEO 4:

Graduates will be successful in pursuing higher studies in engineering or management and will pursue career paths in teaching or research.

PSOs:

PSO1: The ability to analyze and develop computer programs in the areas related to algorithms, system software, multimedia, web design, big data analytics, networking and other computing subjects for efficient design of computer-based systems of varying complexity.

PSO2: The ability to apply standard practices and strategies in software project development using open-ended programming environments to deliver a quality product for business success.

PSO3: The ability to be engaged in sustainable development and demonstrate data analysis and soft computing skills for effective interpretation and decision making to solve real life problems.

Department Of CST & CSE(AIML)

About Department

The Department of Computer Science and Engineering (Artificial Intelligence and Machine Learning) at JIS College of Engineering is dedicated to advancing knowledge and education in the dynamic and rapidly evolving fields of AI and ML. Our curriculum is designed to equip students with a robust understanding of core computer science concepts, coupled with specialized training in artificial intelligence and machine learning. Through a blend of theoretical learning and hands-on experience, we aim to foster innovation and research, preparing our graduates to tackle complex challenges in AI-driven industries and academia. Our state-of-the-art laboratories, experienced faculty, and collaborative research environment ensure that students receive the best education and practical insights needed to excel in this cutting-edge field.

Vision

To lead in the field of Artificial Intelligence and Machine Learning by cultivating a generation of engineers equipped with comprehensive, ethical, and adaptable expertise. Our vision is to excel in technology education and research, serving society with integrity and innovation, and nurturing individuals committed to making a positive impact on humanity.

Highlights of the Department

- **Specialized Curriculum:** Comprehensive courses focused on AI and ML, ensuring students are well-versed in the latest technologies and methodologies.
- **Experienced Faculty:** A team of dedicated professors and industry experts with extensive experience in AI and ML research and applications.
- **State-of-the-Art Labs:** Cutting-edge laboratories equipped with advanced computing resources and tools for AI and ML experimentation and research.
- **Research Opportunities:** Active research programs and projects that encourage students to engage in innovative and impactful research.
- **Industry Collaboration:** Strong ties with leading tech companies and organizations for internships, projects, and collaborative research initiatives.
- **Workshops and Seminars:** Regularly organized events featuring experts from academia and industry, providing insights into the latest trends and developments in AI and ML.
- **Capstone Projects:** Hands-on projects that allow students to apply their knowledge to real-world problems, enhancing their practical skills and employability.
- **Student Clubs and Competitions:** Active participation in AI and ML clubs, hackathons, and competitions, fostering a culture of learning and innovation.

Mission

M1: Foster an environment that cultivates industry-ready professionals, researchers, and entrepreneurs through advanced courses in cutting-edge technologies and state-of-the-art laboratory experiences.

M2: Enable faculty to engage in progressive research and mentor students in emerging themes, fostering excellence in both teaching and research.

M3: Implement capacity development initiatives focused on skilling, upskilling, and reskilling for faculty and students while fostering a strong commitment to professional ethics in technology and innovation.

M4: Cultivate excellence by enhancing curricular, co-curricular, and extracurricular activities by implementing best practices to foster personal and professional growth, ensuring all excel in technical skills and ethical standards.

Message from HOD's Desk



Dr. Sitanath Biswas

The vibrancy of the Department of CSE (AIML) & CST at JIS College of Engineering stems from the collective expertise of our faculty, staff, and students. Our faculty members hail from esteemed universities and industries, boasting specialized knowledge spanning various domains of computer science, artificial intelligence, and machine learning. We take pride in our top-tier lab facilities and software exposure provided to students. We especially with a focus on AI and ML, stands as a cornerstone discipline in today's technology-driven world. It involves the design, development, and maintenance of complex software systems and intelligent algorithms that power our modern society. This encompasses everything from data analytics and natural language processing to advanced robotics and autonomous systems. Beyond its technical aspects, our Department holds a pivotal role in modern society, ensuring the provision of innovative solutions for industries such as healthcare, finance, transportation, and more. Its diverse sub-disciplines, from software engineering to cybersecurity, address crucial aspects of our digital infrastructure and technological advancements. At JIS College of Engineering, our CSE (AIML) and CST departments equip students with comprehensive knowledge and practical skills essential for navigating the challenges of the real world. Join us and embark on a journey towards a rewarding career in computer science and engineering, making a tangible impact on our world through innovation and technology.

Message from Students



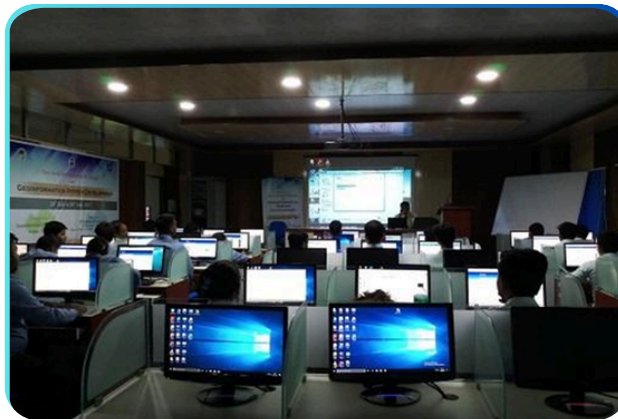
"My experience in the CSE (AIML) program at JIS College of Engineering has been incredibly rewarding. The curriculum is a perfect blend of theoretical concepts and practical applications, preparing me to excel in the rapidly evolving field of Artificial Intelligence and Machine Learning. The faculty's guidance and the department's focus on research and innovation have empowered me to explore my passion for technology deeply. I've had the opportunity to work on exciting projects, including developing patented technologies, which have significantly shaped my understanding of the industry. The collaborative environment and exposure to real-world challenges have been instrumental in my growth, and I'm proud to be a part of this dynamic community."

Chirag Nahata, Graduate Batch 2023-2027
Department of Computer Science & Engineering (Artificial Intelligence & Machine Learning)
JIS College of Engineering



"My journey in the CSE (AIML) program at JIS College of Engineering has been nothing short of transformative. The department's emphasis on hands-on learning, coupled with its cutting-edge curriculum, has equipped me with both the theoretical knowledge and practical skills essential in today's AI-driven world. The faculty members are not only knowledgeable but also incredibly supportive, always encouraging us to push the boundaries of innovation. The numerous workshops, hackathons, and industry collaborations have given me the confidence to tackle real-world challenges. I feel truly prepared to step into the tech industry, and I owe this to the robust education and experience I've gained here."

Snigdha Ghosh
Graduate Batch 2023-2027
Department of Computer Science & Engineering (Artificial Intelligence & Machine Learning)
JIS College of Engineering



Program Outcomes (POs)

After successful completion of the B.Tech. Program, the Graduates will be able to achieve the following Program Outcomes:

- **Engineering Knowledge:** Apply knowledge of mathematics, science, engineering fundamentals, and an engineering specialization to the solution of complex engineering problems.
- **Problem Analysis:** Identify, formulate, review research literature, and analyze complex engineering problems reaching substantiated conclusions using first principles of mathematics, natural sciences, and engineering sciences.
- **Design/Development of Solutions:** Design solutions for complex engineering problems and design system components or processes that meet specified needs with appropriate consideration for public health and safety, and the cultural, societal, and environmental considerations.
- **Conduct Investigations of Complex Problems:** Use research-based knowledge and research methods including design of experiments, analysis and interpretation of data, and synthesis of the information to provide valid conclusions.
- **Modern Tool Usage:** Create, select, and apply appropriate techniques, resources, and modern engineering and IT tools including prediction and modeling to complex engineering activities with an understanding of the limitations.
- **The Engineer and Society:** Apply reasoning informed by the contextual knowledge to assess societal, health, safety, legal and cultural issues and the consequent responsibilities relevant to the professional engineering practice.
- **Environment and Sustainability:** Understand the impact of the professional engineering solutions in societal and environmental contexts, and demonstrate the knowledge of, and need for sustainable development.
- **Ethics:** Apply ethical principles and commit to professional ethics and responsibilities and norms of the engineering practice.
- **Individual and Teamwork:** Function effectively as an individual, and as a member or leader in diverse teams, and in multidisciplinary settings.
- **Communication:** Communicate effectively on complex engineering activities with the engineering community and with society at large, such as, being able to comprehend and write effective reports and design documentation, make effective presentations, and give and receive clear instructions.
- **Project Management and Finance:** Demonstrate knowledge and understanding of the engineering and management principles and apply these to one's own work, as a member and leader in a team, to manage projects and in multidisciplinary environments.
- **Life-Long Learning:** Recognize the need for, and have the preparation and ability to engage in independent and life-long learning in the broadest context of technological change.

PEOs:

PEO1: Graduates will apply their knowledge and skills to succeed in their careers and/or obtain advanced degrees.

PEO2: Graduates are prepared to take up Masters/Research programs.

PEO3: Graduates will demonstrate a strong foundation in computer science principles and advanced knowledge in artificial intelligence and machine learning, enabling them to solve complex problems in diverse domains.

PEO4: Graduates are prepared to be good entrepreneur and responsible social representatives.

PSOs:

PSO1: The ability to understand, illustrate, discuss, explain the fundamental design and working principle of any existing system or new computing model or concept related to the field of computer science and technology and artificial intelligence with machine learning.

PSO2: To design and conduct experiments, as well as to analyze and interpret data.

PSO3: The ability to design, implement and analyse a solution proposal with proper documentation demonstrating adequate technical skill along with the necessary concept for driving propensity towards technological innovation.

Department Of ELECTRICAL ENGINEERING

About Department

Electrical Engineering, a rapidly growing field, was established in 2000 to develop professionals in the field. The department has excellent facilities, including laboratories, audio visual facilities, and a three-time NBA accreditation. Students participate in industrial visits and IEI activities. The teaching-learning process involves assignments, exercise problems, and special training for slow learners. Staff advisors identify slow learners and provide special training on current research areas. Many students have passed interviews and are now working in prime companies. The department organizes conferences, seminars, and workshops for skill development.

Vision

To impart technical knowledge, develop skills for research and innovation and prepare graduates with a great human value to meet the industry and societal needs.

Highlights of the Department

- Highly qualified and dedicated faculties with broad research experiences.
- Well-equipped advanced laboratories including Electrical Machines, Power system, Power Electronics, Network, Control system and MATLAB.
- Faculty & Student publish more than 30 research papers in top-tier journals and international conferences every year
- Faculty & Students completed successfully online NPTEL certificate course in each semester. Many of them secured “Elite + Silver” grade in these courses.
- TATA sponsored “skill and personality development centre (SPDP Centre)” for students.
- Advanced project laboratory to perform hands-on work on innovative projects.
- With continuous efforts of department, most of our meritorious students have qualified GATE/GMAT/GRE exams with high scores and are pursuing higher studies in reputed universities/institutes located in India and abroad.
- Continuous escalating placement record in core industries.
- Strong alumni association.

Mission

DM 1 To impart quality engineering education with holistic development and to produce engineers, technologists, scientists and citizens who will contribute meaningfully to the growth and development of the country.

DM 2 To promote interdisciplinary research work and opportunity to work in a team through collaborative research and project work to meet the industrial and societal challenges.

DM 3 To inculcate professional ethics, focusing on excellence in curricular, co-curricular, extracurricular activities and moral responsibility for a better society.

Message from HOD's Desk



**Dr. Alok Kumar
Shrivastav**

Electrical Engineering, a rapidly growing field, was established in 2000 to develop professionals in the field. The department has excellent facilities, including laboratories, audio visual facilities, and a three-time NBA accreditation. Students participate in industrial visits and IEI activities. The teaching-learning process involves assignments, exercise problems, and special training for slow learners. Staff advisors identify slow learners and provide special training on current research areas. Many students have passed interviews and are now working in prime companies. The department organizes conferences, seminars, and workshops for skill development.

Message from Students



The facilities and infrastructure available at Electrical Engineering of JIS College of Engineering, like labs, are maintained in good condition everywhere. Wi-Fi in classrooms is always available, cleaned, and well-maintained, and the library environment is peaceful. Hostel facilities are cool, and the food is awesome.

BARISH MONDAL
Department of Electrical Engineering
JIS College of Engineering



The labs and classrooms are very clean and well organized. Wi-Fi is working too well. The lab facility is very nice and the teachers are well-behaved and knowledgeable. The hostel facility is very good; they give students good-quality food and a hostel facility

KOUSHIK BISWAS
Department of Electrical Engineering
JIS College of Engineering



Program Outcomes (POs)

After successful completion of the B.Tech. Program, the Graduates will be able to achieve the following Program Outcomes:

- **Engineering Knowledge:** Apply knowledge of mathematics, science, engineering fundamentals, and an engineering specialization to the solution of complex engineering problems.
- **Problem Analysis:** Identify, formulate, review research literature, and analyze complex engineering problems reaching substantiated conclusions using first principles of mathematics, natural sciences, and engineering sciences.
- **Design/Development of Solutions:** Design solutions for complex engineering problems and design system components or processes that meet specified needs with appropriate consideration for public health and safety, and the cultural, societal, and environmental considerations.
- **Conduct Investigations of Complex Problems:** Use research-based knowledge and research methods including design of experiments, analysis and interpretation of data, and synthesis of the information to provide valid conclusions.
- **Modern Tool Usage:** Create, select, and apply appropriate techniques, resources, and modern engineering and IT tools including prediction and modeling to complex engineering activities with an understanding of the limitations.
- **The Engineer and Society:** Apply reasoning informed by the contextual knowledge to assess societal, health, safety, legal and cultural issues and the consequent responsibilities relevant to the professional engineering practice.
- **Environment and Sustainability:** Understand the impact of the professional engineering solutions in societal and environmental contexts, and demonstrate the knowledge of, and need for sustainable development.
- **Ethics:** Apply ethical principles and commit to professional ethics and responsibilities and norms of the engineering practice.
- **Individual and Teamwork:** Function effectively as an individual, and as a member or leader in diverse teams, and in multidisciplinary settings.
- **Communication:** Communicate effectively on complex engineering activities with the engineering community and with society at large, such as, being able to comprehend and write effective reports and design documentation, make effective presentations, and give and receive clear instructions.
- **Project Management and Finance:** Demonstrate knowledge and understanding of the engineering and management principles and apply these to one's own work, as a member and leader in a team, to manage projects and in multidisciplinary environments.
- **Life-Long Learning:** Recognize the need for, and have the preparation and ability to engage in independent and life-long learning in the broadest context of technological change.

PEOs:

PEO 1. Graduates will initiate their careers in industry, government and private sector, research organizations or become an entrepreneur.

PEO 2. Graduates will pursue higher education in electrical engineering or other fields of their comfort.

PEO 3. Graduates will work in a team with leadership quality, show ethical values, express with effective communication, concern to environment and commitment to safety and development of society in the field they choose to pursue.

PSOs:

PSO 1. Analyse, design and solve societal problems to cater the needs of industry related to electrical engineering field.

PSO 2. Conduct investigations and experiments using modern techniques and tools as an individual or in multidisciplinary team to cater the needs of societal and industry related problems.

PSO 3. Be motivated for continuous self-learning and pursue academics and research in advanced areas of Electrical Engineering and be a professional and responsible citizen of India for sustainable energy development.

Department Of Electronics and Communications Engineering

About Department

The Electronics and Communication Engineering department at JIS College of Engineering offers comprehensive labs, including Digital Electronics, Analog Electronics, Microwave, Communication, DSP, VLSI, and Control labs. These facilities provide hands-on experience crucial for technical proficiency. The department emphasizes internships and beyond curriculum training to ensure students are industry-ready. ICT-based teaching and learning methods, such as online resources and virtual labs, further enhance the educational experience. Regular workshops, seminars, and industry interactions are organized to keep students updated with the latest technological advancements, bridging the gap between academia and industry.

Vision

To excel in Electronics & Communication Engineering in order to meet the challenges of modern Industrial society through quality technical education, research, innovation and teamwork.

Highlights of the Department

- **NBA Accreditation:** Achieved NBA accreditation in 2007, 2013 (Tier-II), 2017, and most recently in 2024 (Tier-I), reflecting our continuous commitment to academic excellence and quality assurance.
- **Research & Development Excellence:** The department boasts a strong R&D culture with approximately 75 patents and 8 successfully completed projects funded by AICTE, UGC, and IEL.
- **Faculty Achievements:** Over 80 publications in reputed journals, with more than 75% of faculty members holding PhDs and 15+ years of academic experience, ensuring a high standard of teaching and research.
- **Innovation & Projects:** Students are encouraged to pursue innovative projects, present their work at international conferences, and showcase models at both inter- and intra-college events.
- **Academic Excellence:** Students have shown outstanding performance in NPTEL courses and achieved notable GATE ranks, demonstrating academic rigor and competitiveness.
- **Industry Exposure:** Opportunities to work in industrial environments such as ISRO and BTPS provide valuable practical experience.
- **Global Knowledge Exchange:** Select students have represented the department in international educational tours to Israel, Moscow, Bangkok, and other global destinations.
- **Placement Record:** Consistently high-quality placements every year across top companies and core sectors.
- **Student Publications:** More than 65 student-authored publications, highlighting a strong culture of academic writing and research.
- **Industry-Aligned Curriculum:** Offers industry-relevant elective papers and a demand-driven curriculum to meet evolving market needs.
- **Innovative Teaching:** Adoption of flipped classroom pedagogy to foster active learning and deeper student engagement.
- **Mentorship Culture:** A robust mentoring system led by dedicated faculty members, ensuring personal and academic guidance for every student.
- **Advanced Laboratories:** Equipped with modern lab infrastructure, including a Microchip-authorized training facility and an active student innovation club under IEM.

Mission

1. To educate students from the foundations to the state of art knowledge in the development of electronic devices and communication systems with design optimizations and to carry out research through constant interaction with research organizations and industry.
2. To nourish the mind of growing engineers through qualitative evaluations, internal assessments, corporate trainings, efficient technical communication skills and creative project assignments.
3. To motivate the engineers of the future through competition in communication skill, seminar presentation, project, and group discussion.
4. To encourage the intended engineers in kind, humble and moral behavior with ignition in mind to contribute for the welfare of society.

Message from HOD's Desk



Dr. Moumita Pal

Dear Faculty, Students, and Stakeholders, We are enhancing our Electronics & Communication Engineering curriculum to align with industry needs by integrating emerging technologies such as IoT, AI, Machine Learning, and 5G. Emphasizing hands-on learning, we are increasing laboratory sessions, workshops, and project-based modules. Our focus on comprehensive skill development, robust internship programs, industry interactions, mentorship, and innovation labs ensures students are well-prepared for future challenges. We are committed to adopting outcome-based education, blending traditional and online learning for continuous improvement.

Message from Students



Myself ROUNAK SINGH a student from ECE department have found a great pleasure in learning things in ece subject...

Till now I can't say that I have achieved things but am working for that and will achieve one or the other dayy...



My name is Pushkar Paul, I am the student of JIS College of Engineering, B.Tech,ECE,2nd year.ECE engineering offers me a gateway to cutting-edge technologies shaping the future.As I am very fascinated about the circuits of machines so I take admission in this department.ECE engineers are the architects of the digital world, shaping the future through innovation in telecommunications, electronics, and beyond.So I want to be one of them in future.



Microprocessor LAB



Communication Engineering LAB



Basic Electronics LAB



Analog Electronics LAB

Program Outcomes (POs)

After successful completion of the B.Tech. Program, the Graduates will be able to achieve the following Program Outcomes:

- **Engineering Knowledge:** Apply knowledge of mathematics, science, engineering fundamentals, and an engineering specialization to the solution of complex engineering problems.
- **Problem Analysis:** Identify, formulate, review research literature, and analyze complex engineering problems reaching substantiated conclusions using first principles of mathematics, natural sciences, and engineering sciences.
- **Design/Development of Solutions:** Design solutions for complex engineering problems and design system components or processes that meet specified needs with appropriate consideration for public health and safety, and the cultural, societal, and environmental considerations.
- **Conduct Investigations of Complex Problems:** Use research-based knowledge and research methods including design of experiments, analysis and interpretation of data, and synthesis of the information to provide valid conclusions.
- **Modern Tool Usage:** Create, select, and apply appropriate techniques, resources, and modern engineering and IT tools including prediction and modeling to complex engineering activities with an understanding of the limitations.
- **The Engineer and Society:** Apply reasoning informed by the contextual knowledge to assess societal, health, safety, legal and cultural issues and the consequent responsibilities relevant to the professional engineering practice.
- **Environment and Sustainability:** Understand the impact of the professional engineering solutions in societal and environmental contexts, and demonstrate the knowledge of, and need for sustainable development.
- **Ethics:** Apply ethical principles and commit to professional ethics and responsibilities and norms of the engineering practice.
- **Individual and Teamwork:** Function effectively as an individual, and as a member or leader in diverse teams, and in multidisciplinary settings.
- **Communication:** Communicate effectively on complex engineering activities with the engineering community and with society at large, such as, being able to comprehend and write effective reports and design documentation, make effective presentations, and give and receive clear instructions.
- **Project Management and Finance:** Demonstrate knowledge and understanding of the engineering and management principles and apply these to one's own work, as a member and leader in a team, to manage projects and in multidisciplinary environments.
- **Life-Long Learning:** Recognize the need for, and have the preparation and ability to engage in independent and life-long learning in the broadest context of technological change.

PEOs:

PEO1

Graduates will have a strong foundation in engineering, science, and technology that will enable them to succeed as engineers and innovators in their respective fields.

PEO2

Graduates will comprehend, analyze, develop, & design unique products to address real-world challenges.

PEO3

Graduates will pursue their education beyond the undergraduate level, conduct diverse research, and advance their professional competencies.

PEO4

Graduates will recognize, formulate, and use professional skills and ethics to address industrial, societal, and environmental concerns.

PEO5

Graduates will communicate efficiently and maintain ethical guidelines as a member or leader in a group and as an entrepreneur.

PSOs:

PSO1: Ability to Identify, Formulate & Solve problems of basics of Electronics & Communication Engineering and to apply them to various areas like Analog & digital Circuits, Signal & systems, Communication, VLSI, Embedded System etc.

PSO2: Ability to design the systems of Electronics & Communication Engineering using advanced hardware and software tools with analytical skills to achieve societal needs.

PSO3: Ability to analyze and transfer knowledge of various areas, like Communications, Signal processing, VLSI and Nanotechnology for social & environmental awareness along with ethical responsibility to achieve a successful career that addresses the real-world applications using optimal resources as an entrepreneur.

Department Of INFORMATION TECHNOLOGY

About Department

Welcome to the Department of Information Technology at JIS College of Engineering. Our department is committed to provide laboratories and opportunities for hands-on learning through internships and industry collaborations. Our highly qualified and experienced faculty are dedicated to mentoring students and guiding them towards achieving their full potential. I encourage students to engage in extracurricular activities to enhance their technical skills and leadership qualities and teamwork. I am confident that the students of the department would justify the credibility of the department by showing a high level of professional competence in their respective field.

Best of Luck to all...

Vision

To create technical manpower of global standards with capabilities of accepting new challenges in the field of Information Technology to serve the society.

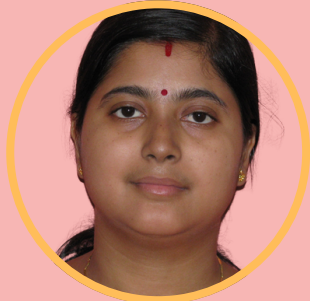
Highlights of the Department

- Industry-ready curriculum to equip students with practical skills and knowledge
- Experienced and dedicated faculty members committing to student success and fostering a dynamic learning environment that inspires critical thinking and professional growth
- Higher Placement record refers to the successful track record of IT students
- Regular Industry - Academia Interaction fostering collaboration between educational institutions and industries
- State-of-the-art laboratories with the latest technology and advanced tools, providing students and researchers with hands-on experience in cutting-edge fields
- Departmental library facilities fostering a focused and resource-rich learning environment
- Different Certification Courses and internship offering students a practical, focused learning experience that can enhance their qualifications
- Counselling and mentoring system providing the students comprehensive support through personalized guidance to manage academic pressures, personal challenges, and career aspirations

Mission

- M1. To impart State of Art technical education to equip students for prosperous professional careers in industry, academia and entrepreneurship.
- M2. To provide all possible support to promote students in the field of research and development.
- M3. To instill a value based socially responsible professionalism for the holistic development of the students and society.

Message from HOD's Desk



Dr. Suparna Dasgupta

Welcome to Department of Information Technology!!! The Department of Information Technology was established in 2000. The department aims to combine educational excellence with industry services. Our vision is to become known as an innovative and leading IT department. Our goal is to provide students with a balanced intellectual and practical experience that enables them to fulfil a variety of social needs. Students of our department are trained to become the best software professionals, project managers, system analysts or industrial team leaders or entrepreneurs in their own innovative way. I am sure that in future times; many students from our department leave a lasting mark in the field of information technology nationally and internationally and make us proud. We have hardworking students, a young and dynamic faculty whose knowledge spans the spectrum of IT disciplines, and a very healthy work culture are the key elements that form the centre of the institute, the Department of IT. university We firmly believe in our ability to succeed and develop self-confidence, trust, commitment and responsibility to the country we have to serve. Such is the psychology of a young and dynamic IT department, IT believes in career development, mental enrichment and remarkable experience that lasts a lifetime.

I am confident that the students of the department would justify the credibility of the department by showing a high level of professional competence in their respective field.

Best of Luck to all...

Message from Students



The IT department has a highly qualified and approachable faculty which ensures personalised guidance and support for all students. It also has separate mentors for a group of students to whom they can refer to in case they have any doubts or face any problem. The HOD of our department, exceptionally supports both the students and faculty. The department has well-equipped labs with all necessary resources, providing students with hands-on learning and experimentation.

Debapriya Dutta
Department of Information Technology
JIS College of Engineering



I can say that I feel proud to be a student of JISCE, and I'm blessed to be a part of information technology. Our department helps us a lot by which I have gained much knowledge and idea's and our faculties are very much supportive .IT department is not only department for me but it's like my family. I am heartily thankful to my each and every teacher to be a backbone of my success story. Again I said that I feel proud to be IT,JISCEians.

Sunirmal Kumar
Department of Information Technology
JIS College of Engineering



Program Outcomes (POs)

After successful completion of the B.Tech. Program, the Graduates will be able to achieve the following Program Outcomes:

- **Engineering Knowledge:** Apply knowledge of mathematics, science, engineering fundamentals, and an engineering specialization to the solution of complex engineering problems.
- **Problem Analysis:** Identify, formulate, review research literature, and analyze complex engineering problems reaching substantiated conclusions using first principles of mathematics, natural sciences, and engineering sciences.
- **Design/Development of Solutions:** Design solutions for complex engineering problems and design system components or processes that meet specified needs with appropriate consideration for public health and safety, and the cultural, societal, and environmental considerations.
- **Conduct Investigations of Complex Problems:** Use research-based knowledge and research methods including design of experiments, analysis and interpretation of data, and synthesis of the information to provide valid conclusions.
- **Modern Tool Usage:** Create, select, and apply appropriate techniques, resources, and modern engineering and IT tools including prediction and modeling to complex engineering activities with an understanding of the limitations.
- **The Engineer and Society:** Apply reasoning informed by the contextual knowledge to assess societal, health, safety, legal and cultural issues and the consequent responsibilities relevant to the professional engineering practice.
- **Environment and Sustainability:** Understand the impact of the professional engineering solutions in societal and environmental contexts, and demonstrate the knowledge of, and need for sustainable development.
- **Ethics:** Apply ethical principles and commit to professional ethics and responsibilities and norms of the engineering practice.
- **Individual and Teamwork:** Function effectively as an individual, and as a member or leader in diverse teams, and in multidisciplinary settings.
- **Communication:** Communicate effectively on complex engineering activities with the engineering community and with society at large, such as, being able to comprehend and write effective reports and design documentation, make effective presentations, and give and receive clear instructions.
- **Project Management and Finance:** Demonstrate knowledge and understanding of the engineering and management principles and apply these to one's own work, as a member and leader in a team, to manage projects and in multidisciplinary environments.
- **Life-Long Learning:** Recognize the need for, and have the preparation and ability to engage in independent and life-long learning in the broadest context of technological change.

PEOs:

PEO1. Graduates will be engineering practitioners and leaders capable of solving real life technological problems.

PEO2. Graduates will be engineering professionals, innovators, or entrepreneurs working in technology development, deployment, or engineering system implementation in the industry.

PEO3. Graduates will perform in their profession with social awareness and responsibility, contributing to the nation's economic prosperity.

PEO4. Graduates will be successful in pursuing higher studies and taking part in research and development activities.

PSOs:

PSO1. Graduates will be able to comprehend, exhibit, analyze and explain the fundamental design and working principle of emerging computing model connected to field of Information Technology.

PSO2. Graduates will be able to use modern tools, programming languages, adapt emerging technologies relevant to Information Technology and devise optimized solutions by applying the significant domain expertise of IT.

PSO3. Graduates will be able to manage projects and resources in a team, apply quality assurance principles to ensure the reliability, robustness, and performance of IT solutions through testing, debugging and continuous improvement processes.

PSO4. Graduates will be able to employable and exhibit continuous learning encompassing the latest IT implications, uphold ethical principles, augmented by research and entrepreneurial aptitude, making significant societal contributions.

Department Of Mechanical Engineering

About Department

The Department of Mechanical Engineering, JIS College of Engineering, offers B.Tech, M.Tech and Diploma Programs in Mechanical Engineering. The B.Tech program was introduced in the year 2009, and is accredited by NBA in Tier-I category since 2019. The industry oriented curriculum & interdisciplinary courses, innovative flipped teaching learning pedagogy, state of the art workshop & laboratories, advanced machineries, have provided our students ample exposure to become industry ready human resources. The department is always focused in producing professional excellence by imparting need based Education and Trainings.

Vision

The Mechanical Engineering Department of JIS College of Engineering fosters the upbringing of technically sound and ethically perfect professionals with innovative mindset for serving the society at large.

Highlights of the Department

- NBA Tier-I Accredited Department since 2019 under self-financed institutions of West Bengal
- A department running BTech, MTech & Diploma in Mechanical Engineering programs under NAAC-A Accredited Autonomous Institution.
- Modern and innovative teaching learning system, Flipped Classroom for digital learning
- Dedicated Departmental Building with 18 laboratories and cutting edge technology interface
- Large workshop measuring 5000 Sqft for variety of student project works
- Modern laboratory equipments in all courses for developing application and evaluation skills.
- Advanced CNC Machine and Robotics Lab for automation projects.
- IEI Student Chapter and well equipped departmental library facility
- Presence of Research Lab and 150 indexed publications in reputed journals.
- Mechatronics and advanced welding Lab for research works.
- Culture of Innovations, 33 no of patents published through faculty and student projects.
- Inculcating research through no of Seminar, Conference and Workshops organized

Mission

1. To impart a thorough knowledge of various core engineering subjects to UG & PG students for ascertaining their fundamental strength in mechanical engineering
2. To inculcate an ambience of cutting edge research and imbibe advanced computational skills to encourage higher studies at national & international levels.
3. To sustain academic excellence through a curriculum consisting of modern laboratories, interdisciplinary subjects and industrial trainings such that students get exposure to leading industries.
4. To build innovative mindset, leadership & teamwork qualities through various projects, addressing real-world engineering challenges
5. To build strong ethical qualities and fostering creativity, critical thinking, and adaptability in the students for lifelong learning to serve the society and nation as a whole

Message from HOD's Desk



Dr. Sandip Ghosh

Mechanical Engineering is by far the largest of the engineering disciplines which boasts a broad range of career including Automotive, Aerospace, Power, HVAC, Railways and Defence industries. The Department of Mechanical Engineering, JISCE strives to graduate highly qualified engineers, through continuous training of advanced courses, technical seminars, industrial visits, foreign internships. The department has a dedicated building which offers a beautiful ambiance, highly qualified faculties, modern laboratories, well stocked books and journals in the library. On behalf of the department, I would like to welcome all budding engineers to join our family of knowledge, skills and innovation. My best wishes to our beloved Alumni in their progressive career.

Message from Students



JIS College Of Engineering is known for its brilliant performance in almost every field. I am currently placed at KEC International. All the guidance provided by experienced faculties of Mechanical Engineering department gave me potential to pursue the different career opportunities. Being the first flipped learning institution in India, the industry ready curriculums, exposure to different Modern Labs & Machineries, Placement oriented trainings, and industrial exposures provided here, has done a great contribution for me, to be a successful professional for industries.



As a B.Tech student at JIS College of Engineering, I have had the privilege of receiving exceptional support and opportunities. The faculty members in my department are highly supportive and cooperative, consistently offering quality training in each semester. Their dedication has significantly contributed to my academic and professional growth. I am deeply grateful for their continuous support in my career development.



Program Outcomes (POs)

After successful completion of the B.Tech. Program, the Graduates will be able to achieve the following Program Outcomes:

- **Engineering Knowledge:** Apply knowledge of mathematics, science, engineering fundamentals, and an engineering specialization to the solution of complex engineering problems.
- **Problem Analysis:** Identify, formulate, review research literature, and analyze complex engineering problems reaching substantiated conclusions using first principles of mathematics, natural sciences, and engineering sciences.
- **Design/Development of Solutions:** Design solutions for complex engineering problems and design system components or processes that meet specified needs with appropriate consideration for public health and safety, and the cultural, societal, and environmental considerations.
- **Conduct Investigations of Complex Problems:** Use research-based knowledge and research methods including design of experiments, analysis and interpretation of data, and synthesis of the information to provide valid conclusions.
- **Modern Tool Usage:** Create, select, and apply appropriate techniques, resources, and modern engineering and IT tools including prediction and modeling to complex engineering activities with an understanding of the limitations.
- **The Engineer and Society:** Apply reasoning informed by the contextual knowledge to assess societal, health, safety, legal and cultural issues and the consequent responsibilities relevant to the professional engineering practice.
- **Environment and Sustainability:** Understand the impact of the professional engineering solutions in societal and environmental contexts, and demonstrate the knowledge of, and need for sustainable development.
- **Ethics:** Apply ethical principles and commit to professional ethics and responsibilities and norms of the engineering practice.
- **Individual and Teamwork:** Function effectively as an individual, and as a member or leader in diverse teams, and in multidisciplinary settings.
- **Communication:** Communicate effectively on complex engineering activities with the engineering community and with society at large, such as, being able to comprehend and write effective reports and design documentation, make effective presentations, and give and receive clear instructions.
- **Project Management and Finance:** Demonstrate knowledge and understanding of the engineering and management principles and apply these to one's own work, as a member and leader in a team, to manage projects and in multidisciplinary environments.
- **Life-Long Learning:** Recognize the need for, and have the preparation and ability to engage in independent and life-long learning in the broadest context of technological change.

PEOs:

The Program Educational Objectives (PEO) of the Mechanical Engineering Program will demonstrate the essential components of a successful engineer for the best career based professional accomplishments after graduation. Therefore, the objectives are following:

1. **Professional Skills & Employment:** To teach students in such a way that they can apply relevant skills in basic science, engineering design, modeling, manufacturing, and management to real-life problems in industries.
2. **Entrepreneurship & Lifelong Learning:** To encourage the incumbents for entrepreneurship & higher studies such that they can impart useful contribution in the field of education, research and modern technology in Mechanical Engineering as well as other allied fields.)

Ethics & Society: To train the students in such a manner that they effectively participate in multicultural and multidisciplinary projects maintaining industrial ethics for the sustainable development of our society.

PSOs:

PSO 1

Apply necessary mathematical and software tools for design, analysis and fabrication of components used in the field of mechanical engineering.

PSO 2

Use critical thinking to analyze the cause and effect of complicated mechanical processes to develop modern engines and machineries for a sustainable future.

PSO 3

Exhibit leadership and team work in handling industrial projects as well as pursue higher studies to contribute in the research and development of advanced materials and green energy.

Department Of Computer Application

About Department

The department is very actively pursuing research in diverse fields of Computer Application world ranging from Security, Mobile Applications, Wireless Networking, Machine Intelligence, Image Processing and lots more. Amidst a relatively young department, faculty members contributed their works collectively in important research forum like IEEE, ACM, Springer, Elsevier etc. Continuous encouragement from the Authority of the Institution enabled the young faculty members of the department to attend and contribute in various International and National Conferences, Symposiums, Seminars and workshops. Our students have participated in different Inter-Intra Institutional events and bagged different prizes. Faculty members are associated in establishing-participating-conducting different value addition programs such as, NPTEL, IIT-Bombay Spoken Tutorial Program, QEEE program, SWYAM program and lots more. The department is eagerly expect advice-guidance- suggestions from everyone to work out our deficiency and can satisfy the required needs-desires in a better way.

Vision

To develop a sustainable ecosystem of technical education while fostering quality in teaching-learning & research through techno-pedagogical approach, capacity building, inculcating ethical values & leadership qualities to create the global citizen for serving the society.

Highlights of the Department

- NIRF Ranked, NAAC A-Graded Institution under MAKAUT, West Bengal.
- India's First Institute endorsed by MHRD, AICTE, UNESCO, World Bank Group, NIPU.
- Smart Class Rooms, Well equipped laboratories, Digital Studio.
- Book Bank Facility, Access to Online Learning Management Systems.
- Training and placement assistance.
- Internship opportunities and industry visit.
- NPTEL local chapter.

Mission

- World Class Education - Provide a state-of-the-art educational infrastructure and enriching project-based learning environment conducive to higher learning for students, internships in leading organizations, participation in national and international community service projects.
- Cutting-edge Research - Maintain a vibrant research environment creating opportunities for intellectual engagement of students in cutting edge interdisciplinary research and innovation through collaborative work with local, regional and international communities.
- Capacity Development - Conduct capacity development programs for skilling, upskilling and reskilling of faculties & students by involving practitioners from governments, corporations, and civil society organizations to enhance their management & leadership qualities as well as commitment to professional ethics.
- Impactful People - Promote a culture of excellence in curricular, co-curricular and extracurricular activities of the Institute by implementing good practices aimed at personal and professional development of students, faculty members & non-academic staffs.



Ms. Sharmistha Ghosh

Department of Computer Application started the journey in the millennium year 2001 with 60 intake capacity for the post graduate program of MCA. The PG program has been affiliated by Maulana Abul Kalam Azad University of Technology (formally known as West Bengal University of Technology).

In the line of thought of the JIS Group "Igniting Minds Empowering Lives", CA department has been working with the goal of Industry Institute Initiative upon a strong foundation of learner centric environment. Department is predisposed to its stake holders to provide 'Excellent Teaching Learning in Technical Education' and to foster the Engineering Knowledge among all the students. Dept. has been practiced 'NextGen' Teaching Learning methodologies for imparting the excellent quality teaching learning to the students' community. Dept. has proud for the 'Team-CA' comprising of Students-Staff-Alumni and highly motivated and learner faculty members, where every stakeholders have taken important role for the betterment of the departmental activities whereas more than thousand JISCECAians consistently excelled in the fast changing IT industry since 2004.

On behalf of TEAM-CA , I welcome you all to the Department of Computer Application, JIS College of Engineering!!!

Message from Students



I'm very thankful to my department and my college and found myself very much lucky for being a part of the JISCE - CA Department. The department helped a lot to build the knowledge of the students regarding computer language and to build their career in the IT field. Also I'm very much thankful to my department as well as my placement cell for giving me this great opportunity. ----- Samaresh Paul



Being a part of JISCE is the one thing that always makes me proud. All the faculties of my department have been extremely helpful during the course. They guided me in each and every step. They have arranged trainings and workshops on personal interviews, brushed up our aptitude skills and what not. And now when I am placed, I couldn't thank them more. I also want to thank the college training and placement cell to make the experience with virtual campusing such wonderful and hassle free. - Suranjana Mitra



Department Of Business Administration

About Department

The Department of Business Administration, that started its journey in the year 2002 is, now one of the most reputed management institutions in eastern India under the aegis of JIS Educational Initiatives. We offer both undergraduate and postgraduate [BBA and MBA] programmes where PG programme is autonomous under MAKAUT (formerly known as WBUT) and UG course is affiliated to MAKAUT, both recognized by AICTE and accredited by UGC NAAC. Here, the focus is not only on imparting managerial knowledge but the right attitude and skills to the students.

Vision

To become a top-ranked research-driven Management institution, focusing on providing quality education and unique opportunities to groom responsible global leaders for a sustainable future.

Highlights of the Department

- Autonomous Institution
- Training & Placement
- Industrial Training
- Cross Culture Training
- Hostel Facilities
- Infrastructure
- Personalized Development

Mission

- To educate students to perform challenging managerial jobs in the industry as a leader and achieve excellence as Entrepreneurs and Researchers.
- To provide excellent research and development facilities for faculty and students to undertake path-breaking theoretical and applied research.
- To uphold the values of Personal Integrity and Social Responsibility in all our decisions.
- To foster continuous learning with state-of-art pedagogical tools.
- To prepare students to become responsible citizens of the society and Global Managers with cross-cultural training.
-



Dr. Anindya Guha

Welcome to the Department of Business Administration at JIS College of Engineering, Kalyani.

Here, we are committed to providing innovative management education and fostering lifelong learning. Our department offers academically rigorous and professionally relevant teaching across various disciplines, including Marketing, Finance, Human Resources, Information Systems, and Operations & Supply Chain Management, Business Analytics, Health Care Management. We aim to equip our students not just with academic knowledge but also with the practical skills needed to excel in their careers.

Message from Students



Sugata Das: Hello this is Sugata Das, studying in 5th Semester of BBA in Hospital Management Course in the Department of Business Administration at JIS College of Engineering. As a BBA in Hospital Management student I've had an enriching experience. The curriculum covers both theoretical and practical aspects of hospital management. Our faculty members are highly supportive and always available for guidance. The college offers internships in hospitals during the course tenure, which provides invaluable hands-on experience. These internships, combined with workshops and seminars, ensure we are well-prepared for our careers in hospital management.



Rishi Shaw: Hello this is Rishi Shaw, studying in 5th Semester of BBA General Course in the Department of Business Administration at JIS College of Engineering. Studying in the Department of Business Administration at JIS College of Engineering has been an incredible journey. The curriculum is comprehensive and keeps us engaged with both theoretical and practical aspects of business. Our faculty members are always approachable and provide excellent guidance. The numerous workshops and seminars we attend help us stay updated with the latest industry trends. The supportive environment here ensures we are well-prepared for our future careers.



Placements

► Placements Provided by the College

The Placement Cell plays a crucial role in locating job opportunities for Under Graduates and Post Graduates passing out from the college by keeping in touch with reputed firms and industrial establishments. The Placement Cell operates round the year to facilitate contacts between companies and graduates. The number of students placed through the campus interviews is continuously rising. On invitation, many reputed industries visit the institute to conduct interviews.

We have been successful in maintaining our high placement statistics over the years and the fact that our students bear the recession blues with record breaking placements itself is a testimony to our quality. Our ingenious alumnae have set new standards in the corporate world through their estimable contributions and it is my firm conviction that we will continue that legacy in the years to come.

The Placement Cell organizes career guidance programmes for all the students starting from first year. The cell arranges training programmes like Mock Interviews, Group Discussions, Communication Skills Workshop etc and it also organizes Public Sector Exam Training for students who are interested to join Government Sectors. It also invites HR Managers from different industries to conduct training programmes for final year students.

The college has been creating records year after year. With more than 100 companies visiting JIS College of Engineering already and ongoing 90% placements for the 2022-23 academic year.

► Internships

Internship is an integral part of college annual calendar of activities. We have an Industry alliance department comprising of placement managers, faculties and industry professionals to strategize and to prepare systematic process of dovetailing our students career aspirations with demand of the industry.



Research & Development

Research and Innovations are one of the key focus areas of the Institute supported by a vibrant R&D ambiance, world class R&D infrastructure and numerous Centre of Excellence. The Institute has a well-defined IR&D policy and through a standard R&D ecosystem student are motivated towards achieving their research goals either through innovations or through publications which ultimately towards research excellence like persuasion of PhD Work, R&D exposure in networking Institute and abroad.

Library at a Glance

▶ JISCE Library

The library system consists of Central and Departmental Libraries are integrated Knowledge Resource Centers with an array of print and digital information sources of every relevant field of academic and research activities. All the 91497 books of the Central Library are computerized. The footfall is counted through Biometry based Smart Gate installed at the entrance of the Central Library.

▶ Floor Area

The library consisting of the following areas:
Carpet area of Central Library main building is 1,035 sq.mt along with reading room, Book Bank section and Digital library spread over 2nd and 3rd floor of the building.

Carpet area of library (in m2) : 654.680 m2

Reading space (in m2) : 380.475 m2

▶ Timings, Ambience and Usage Timings:

- Timings: 8:00 a.m to 8:00 pm during working days
- Number of seats in reading space : 172
- Number of users (issue book) per day : 208
- Number of users (reading space) per day : 199



▶ Library Automation, Online Access, Networking

Library Automation

: Yes.

By using LIBMAN Software (2017-Till Date) & LIBSYS (2004-2017)

Management Computerization for search, indexing, issue/return records Bar coding used

: Yes

RFID and Bar-coding for Circulation
RFID for searching and Indexing

Library services on Internet/Intranet

: Yes

▶ Library Collection

- Total Book Volume : 91497
- Total Title : 8774

▶ Library Services

- Circulation : Book Bank, Text Book & Rare Books
- OPAC : Online Public Access Catalogue
- Photocopy : By abiding copyright law.
- Digital Facility : IEEE e Journals
J-Gate Science and Technology
IEEE Wiley e-Books
Wiley e-Text books
NDLI, NPTEL, NLIST
Question Papers
Video Lectures & Flip Learning
Digitized Books

▶ Library Reading Room Services

- Reference Book Service
- Daily News Paper
- Print Journal
- Magazine
- Internet Access
- CD & Question Paper
- Faculty Publication
- Student Project Report

Our Alumni Our Pride

 <p>PRAMIT MITRA Senior Data Engineer</p>  <p>ORACLE, USA</p>	 <p>JAYDEEP MANDAL Founder and MD</p>  <p>Aakar Innovations Pvt. Ltd</p>	 <p>JAYANTA DAS Software Engineer</p>  <p>MICROSOFT, USA</p>
 <p>DR ANWESHA KHASNOBISH Scientist-Research and Innovation</p>  <p>TATA CONSULTANCY SERVICES</p>	 <p>SHUVRAJYOTI DEBROY Data Engineer</p>  <p>AMDOCS, CYPRUS</p>	 <p>ANINDITA MAHATO Data Engineer</p>  <p>APPLE</p>
 <p>SHUVRAJYOTI DEBROY Senior Data Engineer</p>  <p>CYPRUS, EUROPEAN UNION</p>	 <p>CHITRADEEP BARMAN Sr. Manager</p>  <p>USA</p>	 <p>DR POULAMI BASU Researcher</p> <p>OSLO SCIENCE PARK FREDRIKSTAD, NORWAY</p>
 <p>BIRESWAR DEB PURAKAYASTHA Manager</p>  <p>ERLANGEN, GERMANY</p>	 <p>ALIP CHATTOPADHYAY Global Practice Manager</p>  <p>Cincinnati, USA</p>	 <p>MANISH KUMAR Manager</p>  <p>INDIA</p>
 <p>SARMISTHA BANERJEE Senior Associate</p>  <p>ONTARIO, CANADA</p>	 <p>ZENNIS DAS Senior QA Engineer</p>  <p>MELBOURNE, AUSTRALIA</p>	 <p>SWAGATA BASU Engineering Manager</p>  <p>WEST DRAYTON, UNITED KINGDOM</p>
 <p>DHRUV GUPTA Senior Consultant</p>  <p>SANTIAGO, SOUTH AMERICA</p>	 <p>SUNANDA CHATTERJEE Tech Lead</p>  <p>H C L Technologies America Inc WASHINGTON DC, USA</p>	 <p>WRITICK GHOSH Asst. Manager Production</p>  <p>SOUTH AFRICA</p>

Infrastructure

Land, Built-up area: The institute has sprawling 17.5 acres campus with built up area of 387160.36 Sq.ft.

1

2 Power backup: 04 numbers DG Sets (125 KVA, 62.5 KVA, 45 KVA, 25 KVA)

Canteen: 01 Students Canteen and 01 Staff Canteen

3

4 Hostel: 03 [1 boys and 2 girls]

Class rooms: 71

5

6 Tutorial rooms :21

Auditorium:02

7

8 Conference Hall: 01

Total number of laboratories: 57

9

10 Total number of Advanced laboratories with modern R&D facilities: 20

Extra-Curricular Activities

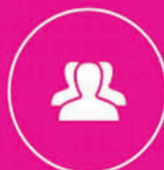


Student Support



Expert trainers

Expert trainers Every College trainer is hand-picked to ensure they love teaching and helping. You can't become a trainer without also holding significant industry experience, a qualification in the field being taught and a teaching qualification.



Study coaches

Receive a "study coach for life". Our study coach for life policy means a teacher is allocated to you for the life of your enrolment. You can ask questions and receive a quick response from the same person throughout your study.



Interactive support webinars

For added support, you have the option of attending our regular interactive support webinars - where you can engage with trainers, study coaches and study peers to discuss course work and share challenges.



Student support

Is available 8am to 8pm on weekdays and 9am to 5pm on weekends IST.

Green Campus

A

SOLAR POWER DRIVEN TOTO:

No. of solar panels: 01
Power generation/panel: 100 wp
Total power generation/day:500 Wh



B

RAIN WATER HARVESTING PROJECT:

Catchment area: 1800 sq.mt.
Holding capacity of the reservoir: 2000 l.
Distilled water holding capacity: 1000 l.
Total water harvested in monsoon season: 4,62,000 l.



C

SOLID WASTE MANAGEMENT

Facilities for segregation of bio-degradable and non bio-degradable waste
Facilities for composting



D

E-WASTE MANAGEMENT

Facilities for collection and safe storage of campus e-waste



1

BIOGAS PLANT:

Installed capacity :1000 L.
Gas generation capacity : 120 L/day
Gas calorific value : 6 KWh/m³



2

SOLAR POWER GENERATION:

No. of solar power panels: 20
Power generation/ panel: 0.8 w_p
Total power generation/day: 5 Kwh



3

SOLAR TREE :

No. of solar tree: 02
No. of solar panels: 18
Power generation/panel:30 wp
Total power generation/day: 2700 Wh



4

SOLAR STREET LIGHTS :

No. of solar street lights : 07
No. of solar panels/lamp post : 01
Power generation/panel :100 wp
Total power generation/day : 500 Wh



Campus Life



#CampusLife

